

“Little City Amid the Hilltops”--
Tallahassee in the Gilded Age



Mary Cathrin May

*From Bust to Boom:
A Tour of Tallahassee in the Gilded Age*

**Part I:
A Stroll around the Business Section, ca. 1880-1890**

**Part II:
Now We Go Forward, 1885-1915**

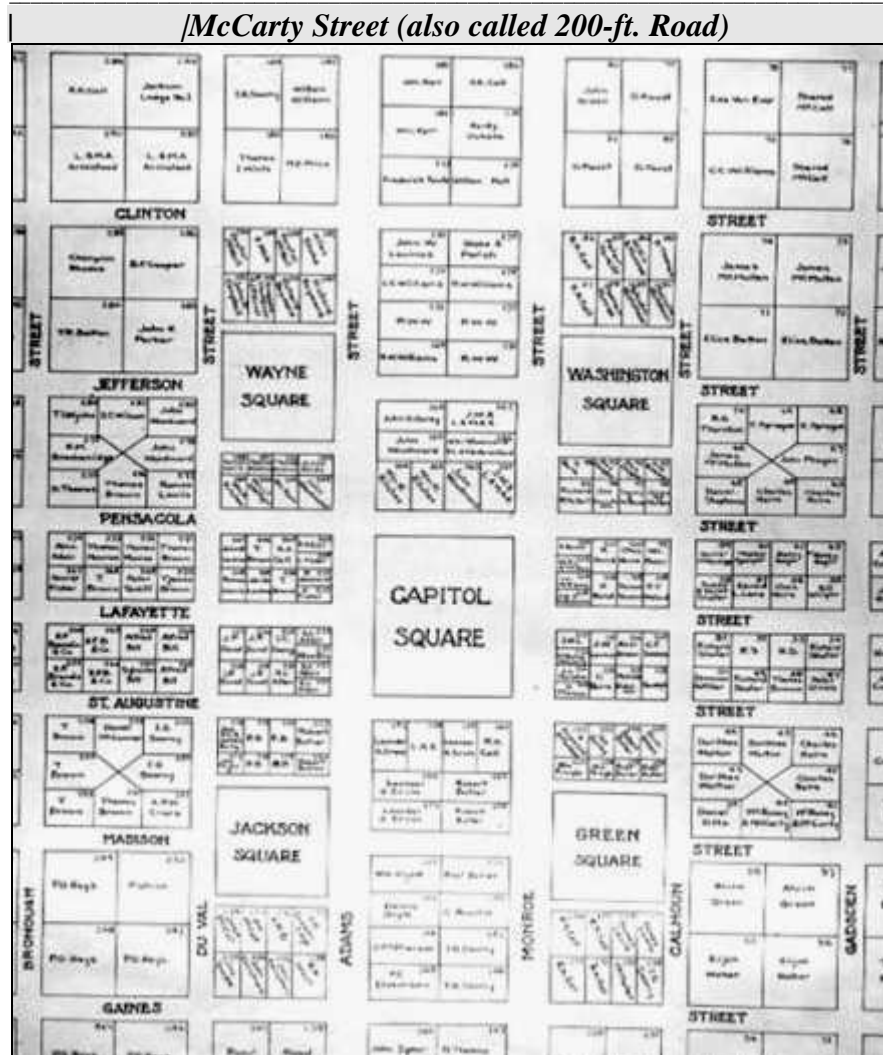
**Part III:
Yesterday and Today**

*Unless otherwise noted, all photos and maps are courtesy of
State of Florida Archives*

Part I: Stroll around the Business Section

1. Map of Tallahassee, ca. 1880

North



South

Population:

Tallahassee 2,600 (est. 1/3 freedmen)

Leon County 19,000 (est. 2/3 freedmen)

2. Looking West at Adams and McCarty (Park) Streets



At right: First Presbyterian Church, built 1838

At left: City Market House

3. Looking north on Adams Street to McCarty



***Background:* First Presbyterian Church, built 1838,
Tallahassee's oldest church building**

***At left:* Union Bank building, established ca. 1830
Housed the Freedmen's Bank, 1866 – 1875
Occupied by small businesses, 1880**

**4. Masonic Lodge & Odd Fellows Hall,
SW corner of Adams and Clinton (*College*) Streets**

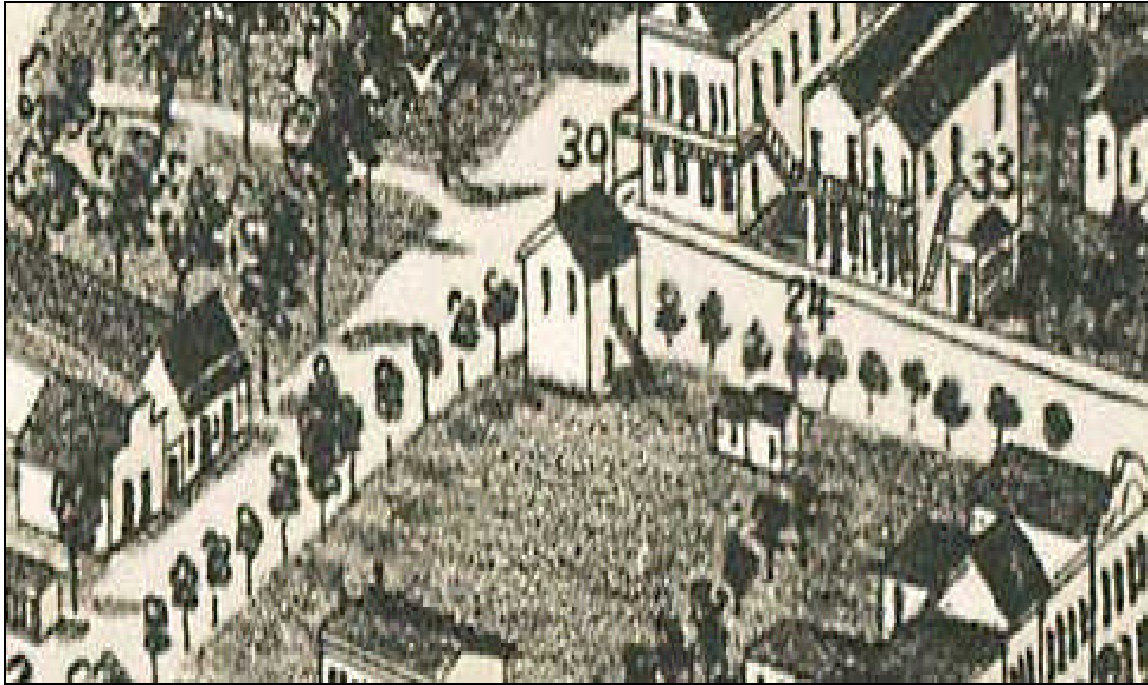


1850 – 1927 Quarters of Jackson and Leon Lodges

Present-day site of the Governor's Club



5. Intersection of Adams and Jefferson Streets



(Illustration from map by Wellge, 1885)

30 (above):

Lower level -- R. & J. Munro, General Merchandise

Upper level -- Gallie's Hall, an entertainment center

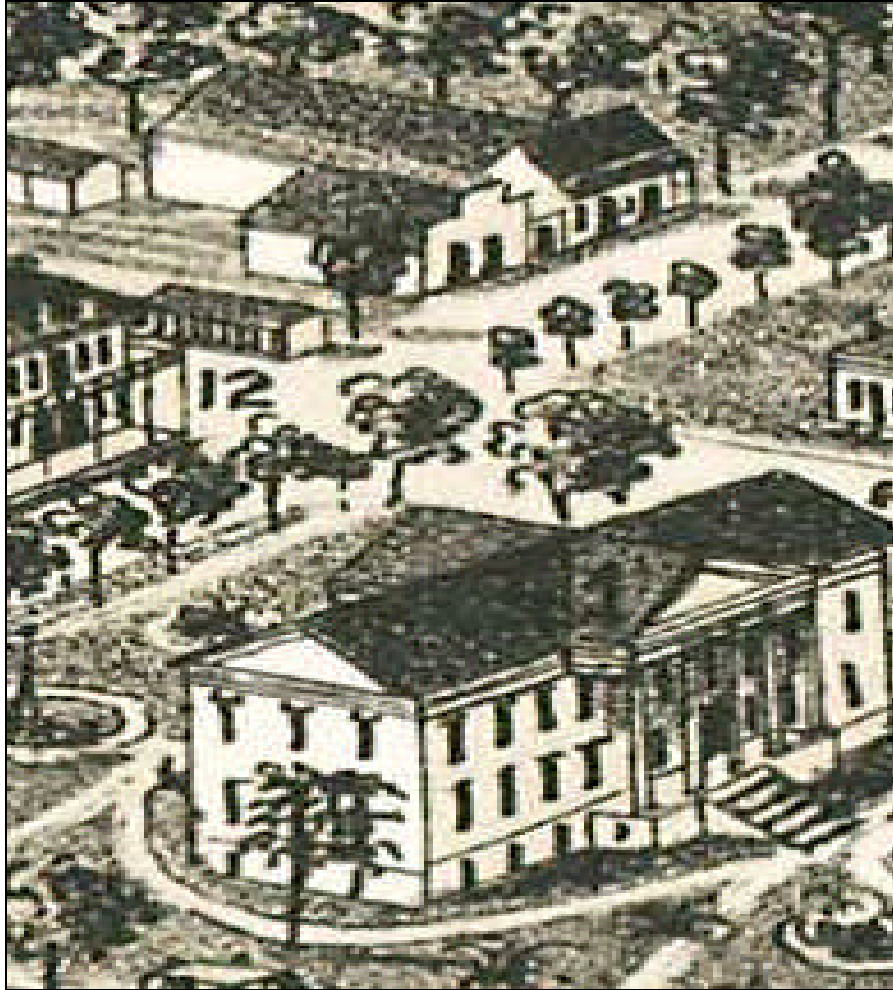
**6. Munro Opera House, ca. 1892
NE Corner of Adams & Jefferson Streets**



**1873-1890
1890**

**Gallie's Hall
Renamed Munro Opera House**

7. View NW - Intersection of Adams and Pensacola



(Illustration from Wellge map, 1885)

Foreground: State Capitol

Upper left: City Hotel (# 12)

8. City Hotel
SW corner of Adams & Pensacola



YEAR

EVENT

Built, 1826

Florida Hotel

By 1860

Renamed City Hotel

1884

Renamed Hotel Morgan

1885

Destroyed by fire

Today

Site of State Capitol

9. Florida State Capitol, ca. 1880
Lithograph of west portico fronting on Adams Street



Left foreground: Confederate Monument

In 1881, Ladies Confederate Memorial Association erected the monument on the west lawn of the Capitol.

Later, the monument was moved to the east lawn where it stands today.

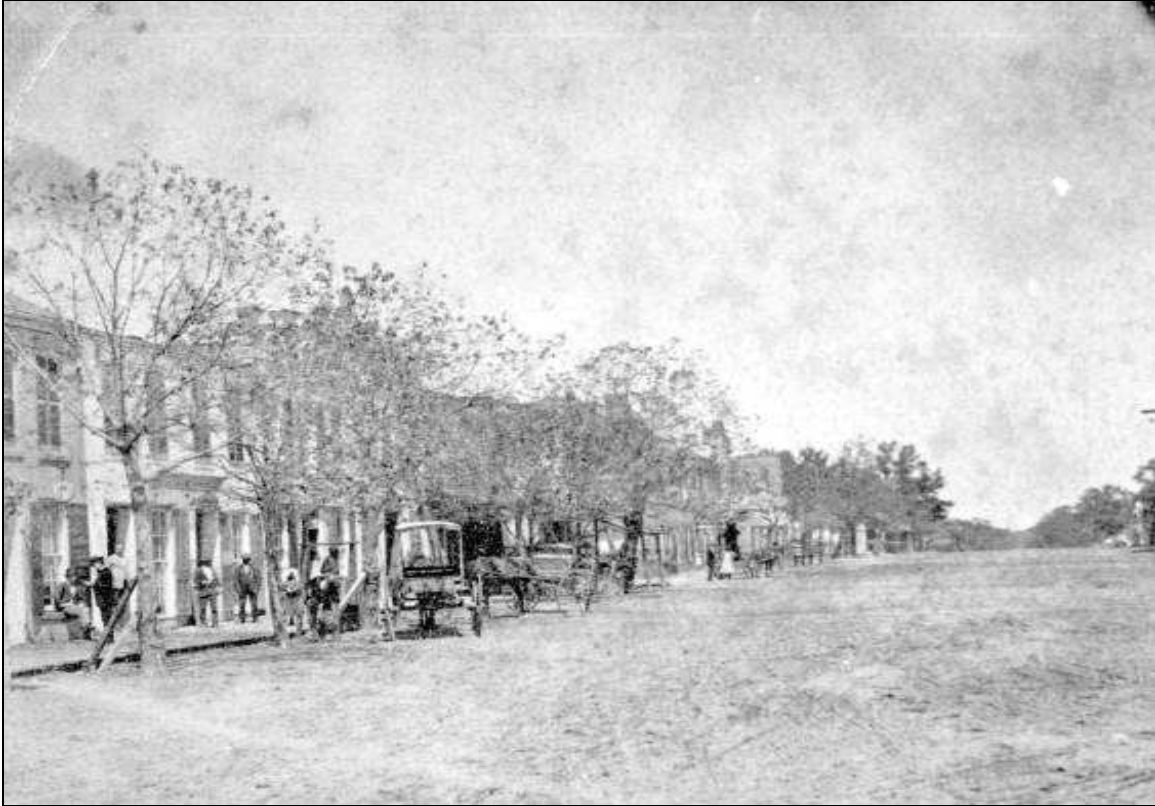
10. Florida State Capitol

East Portico fronting on Monroe Street



**The State Capitol was completed in 1845,
the year Florida entered the Union as the 27th state.**

**11. Looking NW at Monroe from Pensacola Street,
after 1880**



**12. Stores on Monroe, between Jefferson and Clinton
Looking northwest**



Looking southwest



Note: some facades still exist today!

13. Leon Saloon
SW corner of Monroe and Clinton



Today, the Florida Assoc. of Realtors on that site!

14. Looking SW down Monroe from McCarty



Today, the Florida Assoc. of Counties is on that corner.

**15. East side of Monroe between MCarty and Call,
ca. 1890s**



Center **J. C. Kemper Livery Stable**

At right **Home of Julius & Henrietta Diamond,
parents of Miss Ruby Diamond**

Background **Roof of St. John's Episcopal Church,
Dedicated in 1888**

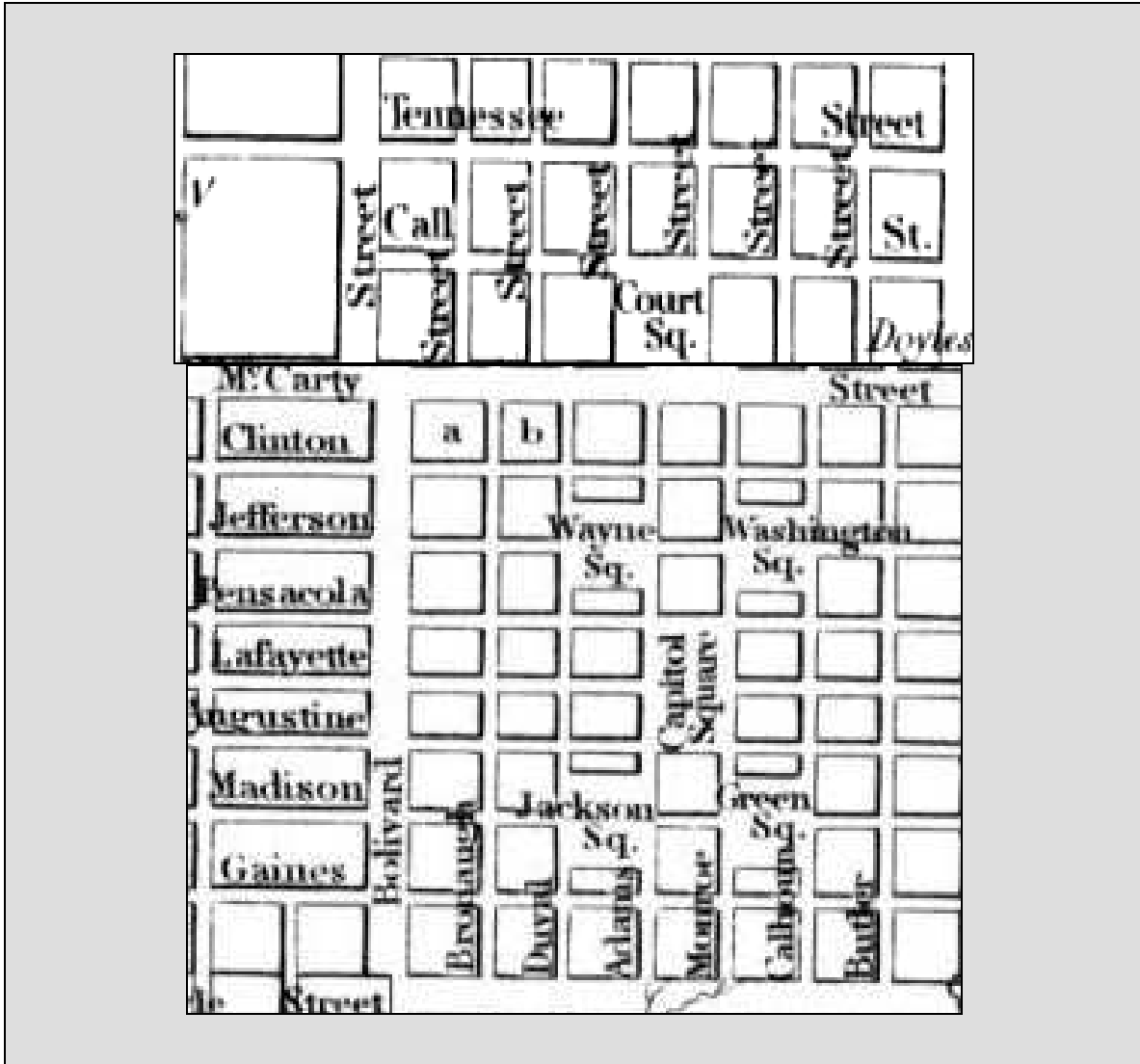
16. Leon County Jail, 1840-1888



**Looking west across Monroe Street;
the jail faced south toward McCarty.**

**17. Court (House) Square on McCarty Street
Site of first Leon County Court House, 1840-1879**

North



South

The Leon County Court House burned in 1879

18. Looking west from McCarty & Adams



Extreme left: the Columns; R: First Presbyterian Church



**The Columns, built 1830.
In 1971, relocated to the corner of Park & Duval.**

Part II: “Now We Go Forward”

19. St. James Hotel, NE corner of Monroe and Jefferson Streets

“An ornament to the city.”



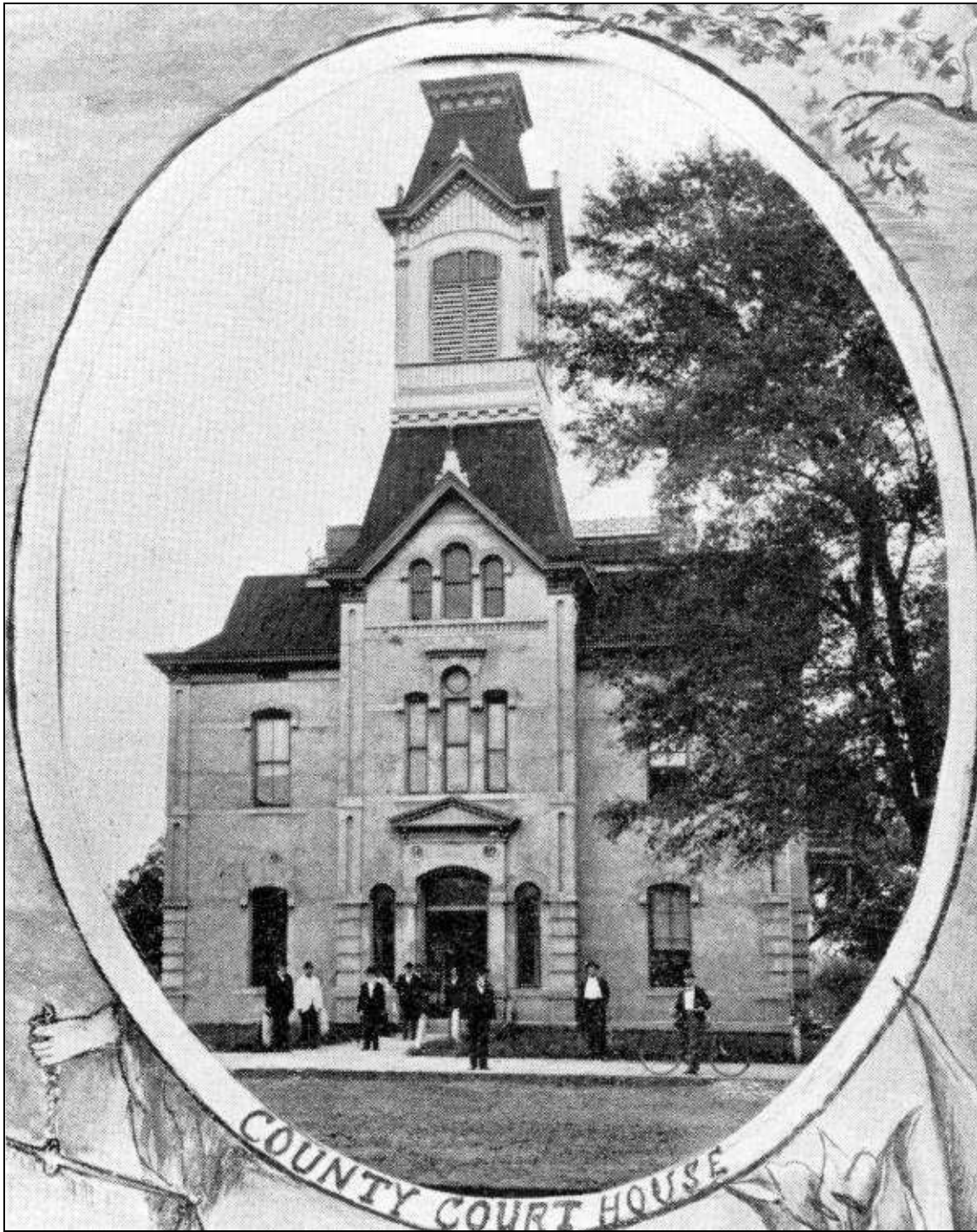
**By 1906, the *St. James* was renamed the *Bloxham Hotel*,
in honor of Governor Wm. Bloxham**

**20. Leon Hotel, shown ca. 1890
In Court House Square on McCarty Street**



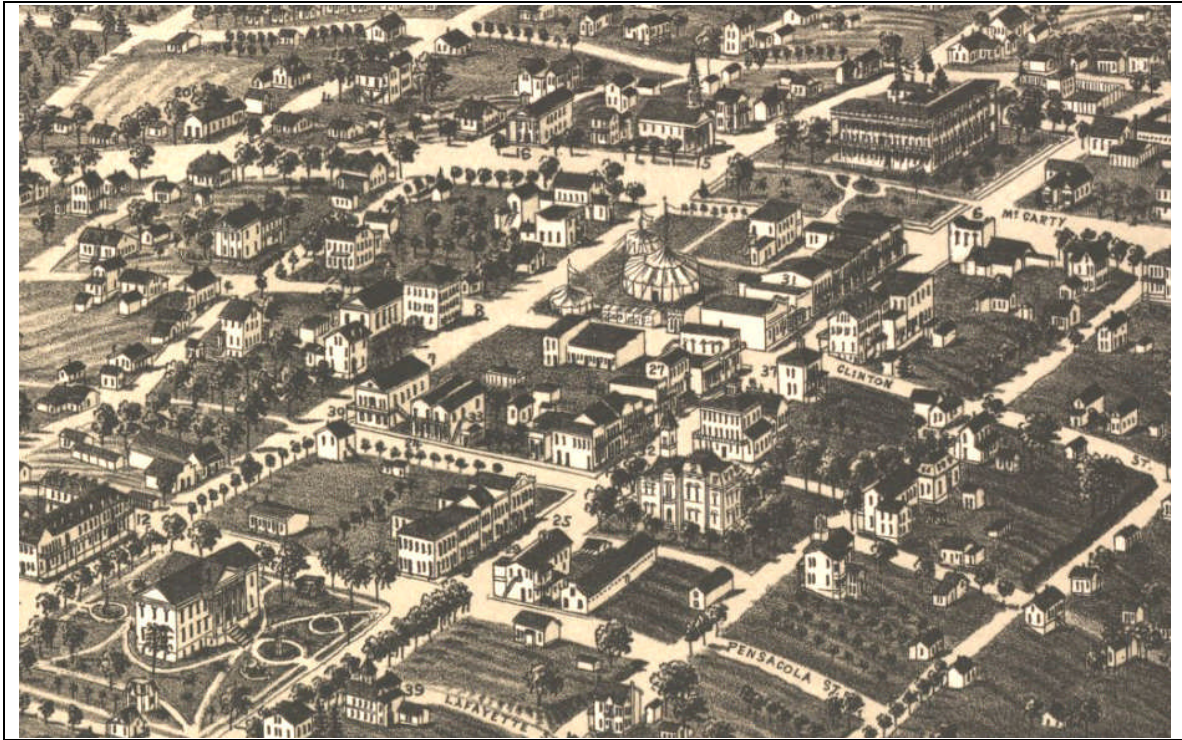
- Leon Hotel opened New Years Day 1883**
- Destroyed by fire in 1885**
- Second Leon (*above*) opened New Years Day, 1886**
- Destroyed by fire in 1927**

**21. Leon County Court House,
in Washington Square on Monroe Street**



Leon County Court House, dedicated in October 1883.

22. Downtown Tallahassee, ca. 1885



(Wellge map)

Left foreground:

Right Center:

Center background:

State Capitol

Leon County Court House

**First Presbyterian Church
& Leon Hotel**

23. Construction of the Leon County Jail, 1888

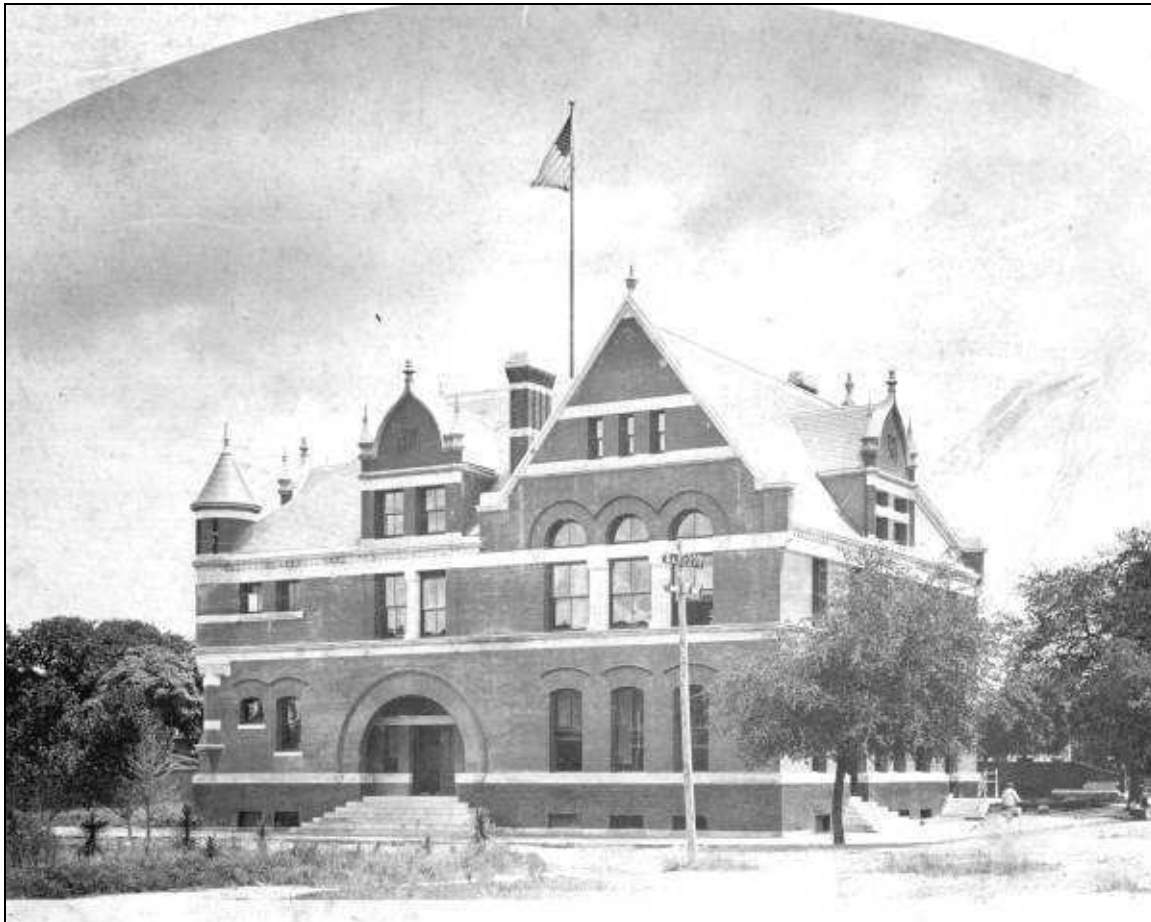


On the SE corner of Gaines and Gadsden Streets

24. Tallahassee Street Railway, ca. 1890-95
Railcars traveling south on Monroe Street



**25. U. S. Court House and Post Office, ca. 1893
Looking SE at Adams and McCarty Streets**



26. City Markets, before 1896



27. New City Market House, 1896
SE corner of Jefferson and Adams Streets

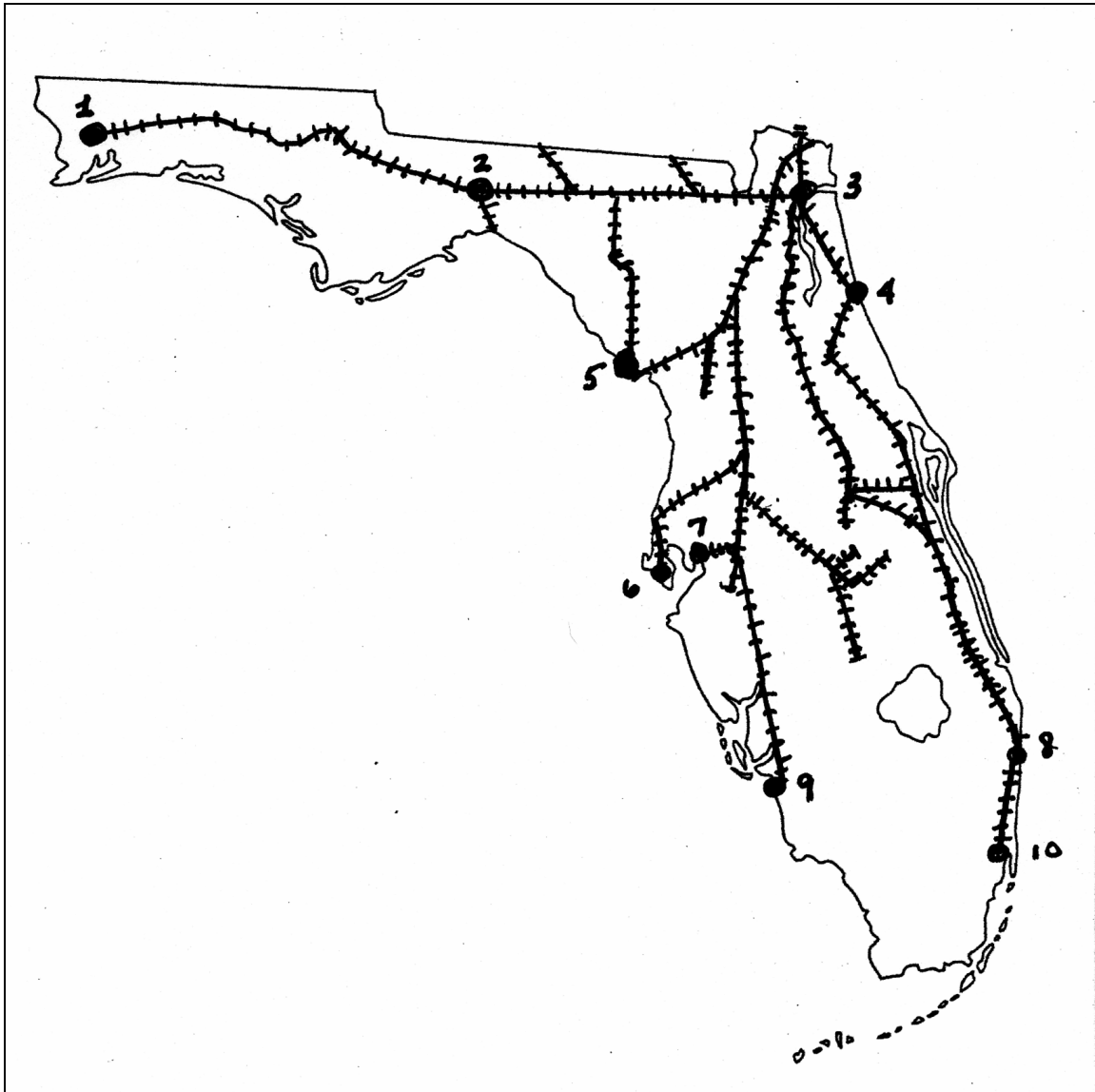


Men in white aprons likely were workers at the Market.

***In background:* the “pipestand”, or water tower, for the city’s new water works system**

***Extreme left:* Munro Opera House**

28. A Changing Landscape: Florida Railroads, 1890



Selected Cities & Populations, 1890

No.	City	Pop.	No.	City	Pop.
1	Pensacola		6	St. Petersburg	
2	<i>Tallahassee (3,000)</i>		7	<i>Tampa (15,000)</i>	
3	<i>Jacksonville (29,000)</i>		8	Palm Beach	
4	St. Augustine		9	Ft. Myers	
5	Cedar Key		10	<i>Miami (1,681)</i>	

(Mary Cathrin May)

29. Florida votes to keep the Capitol in Tallahassee

Election Results, November 6, 1900

City	Vote
Tallahassee	14,875
Jacksonville	7,822
Ocala	4,502
St. Augustine	2,902

(Mary CathrinMay)

30. East Portico of the Florida State Capitol, 1902



**Remodeled Capitol,
with new dome and wings (N and S)**

**31. Tallahassee City Hall in the Union Bank building,
1908-1916**

West side of Adams Street near Park Avenue*



***Note: 1906 McCarty Street renamed Park Avenue**

32. City Hall in Market House, 1916-1937

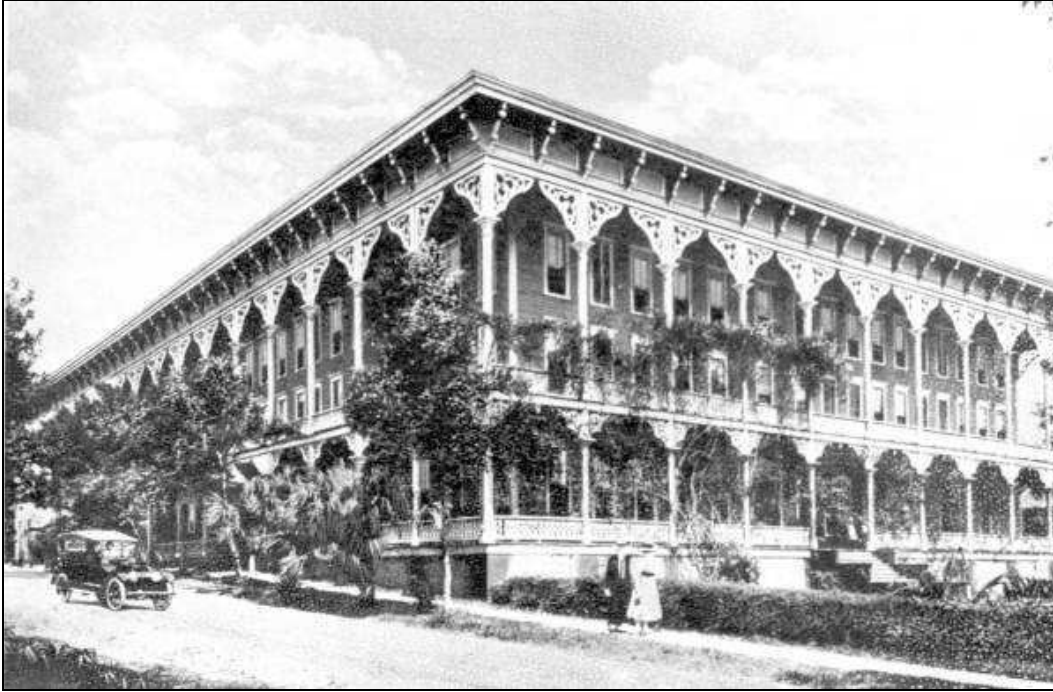


On April 1, 1916, the Tallahassee Fire Department received its first motorized fire truck.

Part III: Yesterday and Today

33. Court House Square, Park Avenue

Looking NW at Leon Hotel, 1883-1927



U. S. District Bankruptcy Court of North Florida



Note spire of First Presbyterian Church, left background

34. SE Corner, Adams & Park
U. S. Court House & Post Office, ca. 1910



Hilton Hotel, 1970



Today, the Doubletree Hotel is on this site!

35. Monroe between Park and Call, 1890s & today



Tennyson Condos & Monroe Park Towers



In background: Spire of the St. Johns Episcopal Church

**36. Looking north on Monroe Street
from Leon County Court House, ca. 1890 and 1985**



**37. Monroe Street, looking SW toward Capitol,
ca. 1903 & 1995**



Background: (L) – dome of old Capitol;
(R) – 22-story Capitol built in 1970s

38. Looking *East* down Jefferson St. from Adams, 1839



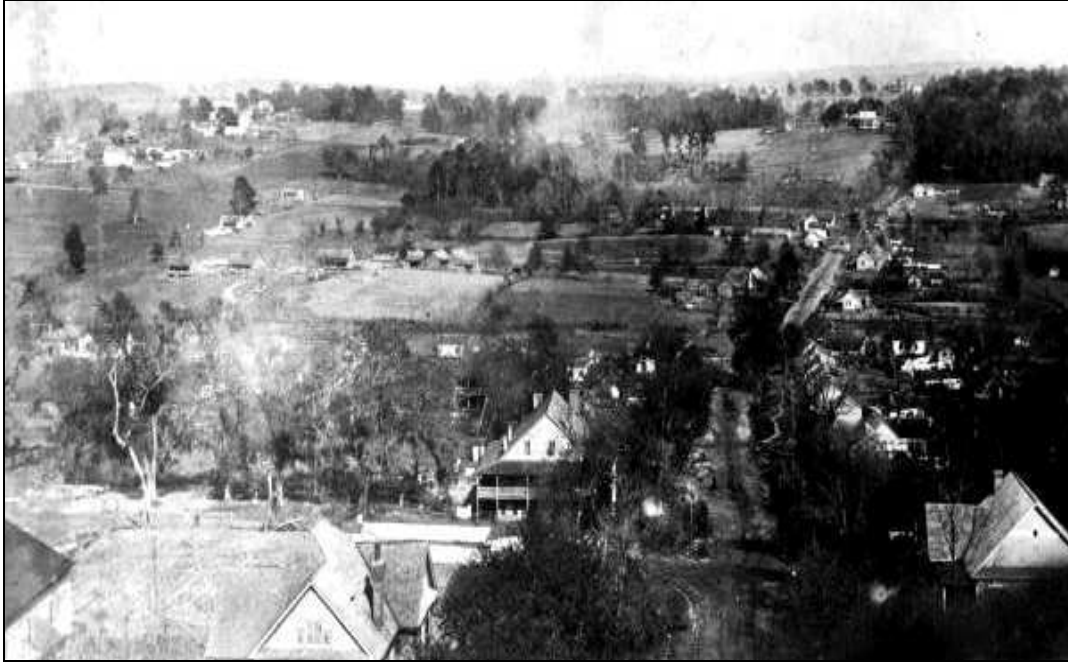
Same view, 1910



39. NE at Jefferson Street & Adams, 1893 & 1987



40. Looking East from Capitol Dome, ca. 1915 & 1976



pas finis